



HYPERION



3,825 SF



4 BEDROOMS



4.5 BATHROOMS

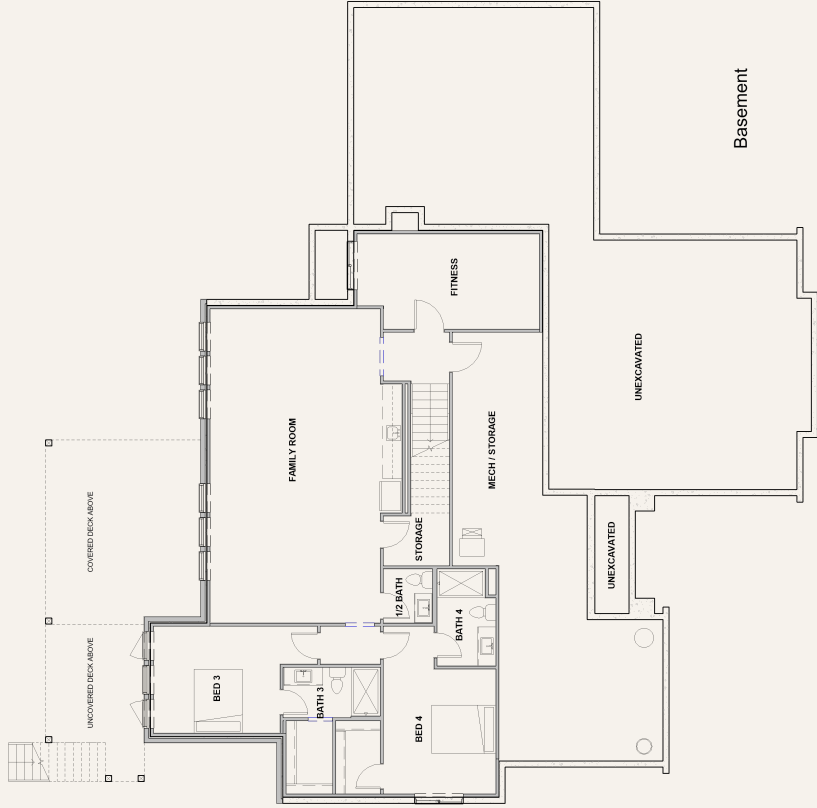


RANCH

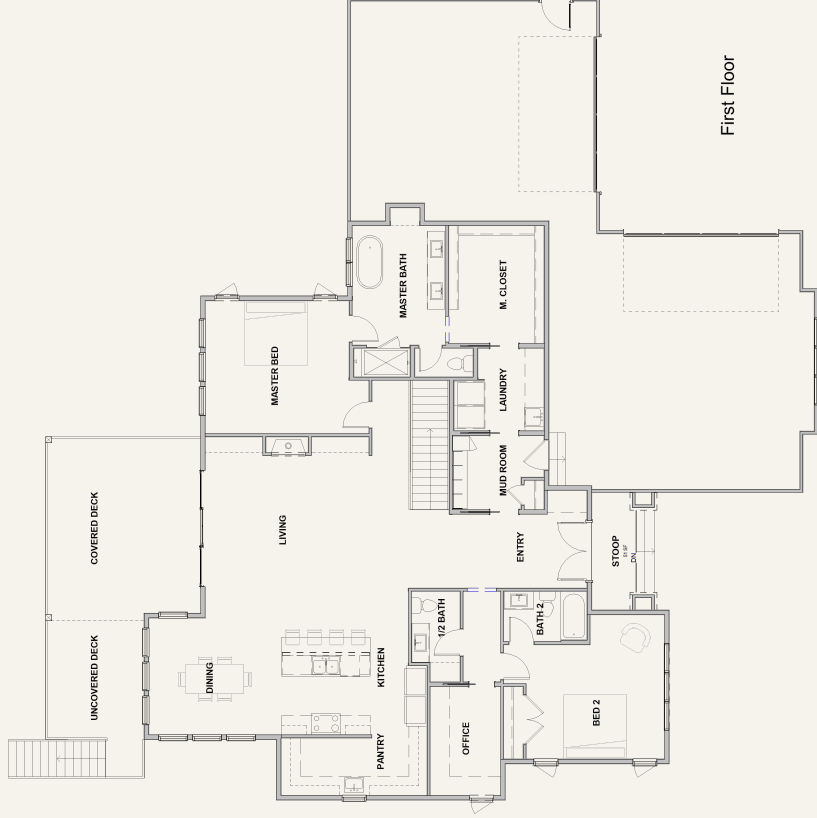
European romantic curves and finishes make for the perfect balance of elegance, luxury and captivating curb appeal. Characterized by old world inspired stone details, arches, and textures.

The Hyperion plan offers a unique combination of single-level living and luxurious design. From the large chef's kitchen and adjacent scullery to the lower level fitness room, each space is meticulously crafted to provide comfort and style, making it the perfect place to relax and enjoy life's best moments.

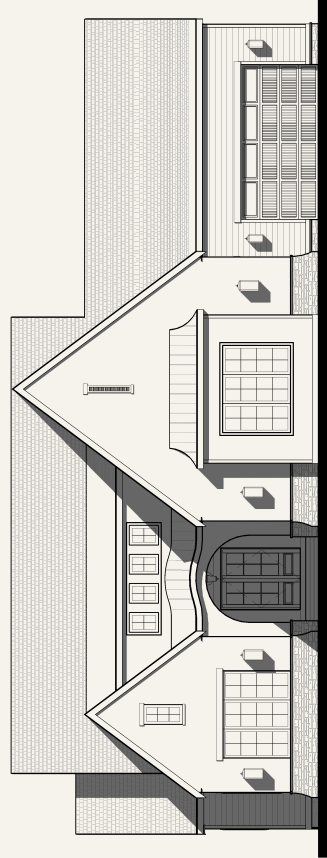
HYPERION



Basement



First Floor



Front Elevation